

New Product



We turn out
top quality



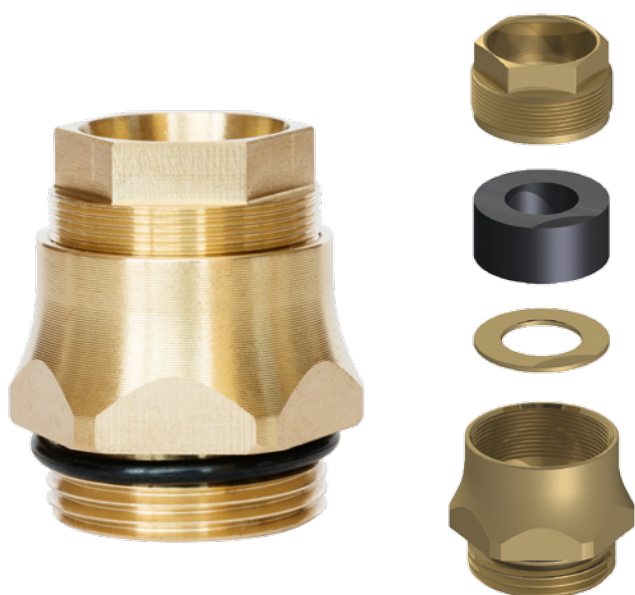
ERNST HEINRICH

Reacher

DIN 89 285 Cable Gland for Unshielded Cables

The Reacher cable gland has been specially developed for the internal and external electrical installation of unshielded cables. Reacher represents modern, elegant design. A torsion security element enables **rotation-safe cable mounting**. Reacher offers **Class B**

strain relief based on EN50262 in the main areas. The Reacher is available in a standard brass version, but can be delivered with a **chrome** or **nickel-plated surface** as well as other materials like A2/A4 steel or aluminum.



Technical Data

- Connecting threads from M16 x 1.5 to M105 x 2 according to the DIN 89 285 or EH norms
- Cable diameters up to 83 mm
- Protection rating: IP 68
- Temperature range: -40 to +100 °C
- Class B strain relief based on EN50262 for the main sizes
- Material: brass (MS58 – CuZn39Pb3), A2 steel (1.4305), A4 steel (1.4571), aluminum (AlMgSi alloys)
- Surface: brass (blank, chrome or nickel-plated)

Publication Date: October 2014 · Information subject to change

ERNST HEINRICH GmbH & Co. KG

Winsbergring 10 Telephone +49 (0)40 890 69 29 -0
22525 Hamburg Telefax +49 (0)40 890 69 29 -29
Germany

www.ihre-kabelverschraubung.de

info@ernst-heinrich.de
www.ernst-heinrich.de



GL Systems Certification

New Product



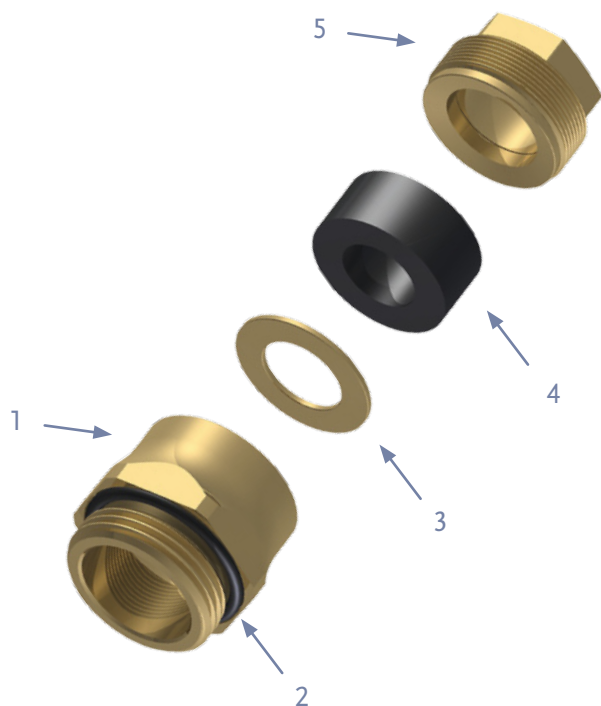
We turn out top quality



ERNST HEINRICH

Reacher

DIN 89 285 Cable Gland for Unshielded Cables



Parts List

Item No.	Name	Quantity
1	Body	1
2	Connecting Thread Seal	1
3	Washer	1
4	Seal	1
5	Torsion Protection Element	1

Product Variants

Type	Thread	Cable Ø	L1	L2	AF1	AF2
Reacher 16	M16 x 1.5	6.0 – 7.5	23	7	19	13
Reacher 18	M18 x 1.5	7.0 – 10.5	23	8	22	15
Reacher 24	M24 x 1.5	7.0 – 17.5	27	8	27	19
Reacher 30	M30 x 2.0	13.0 – 20.5	31	9	32	25
Reacher 36	M36 x 2.0	16.0 – 26.5	33	10	38	30
Reacher 45	M45 x 2.0	26.0 – 32.5	37	10	50	41
Reacher 56	M56 x 2.0	32.0 – 41.5	40	11	60	50
Reacher 72	M72 x 2.0	41.0 – 56.5	44	11	80	65
Reacher 80*	M80 x 2.0	56.0 – 68.0	47	13	85	75
Reacher 105*	M105 x 2.0	68.0 – 83.0	Coming soon			

(Measurements in mm)

Materials

Material	Surface (optional)
Brass: CuZn39Pb3	Blank, chrome or nickel-plated
A2 Steel: 1.4305	-
A4 Steel: 1.4571	-
Aluminum: AlMgSi alloy	-

(Other materials upon request)

- Connecting threads based on DIN 89 285 or EH norms
- Cable diameters up to 83.0 mm
- Protection class: IP 68
- Class B strain relief based on EN50262 for the main sizes

Publication Date: October 2014 · Information subject to change

ERNST HEINRICH GmbH & Co. KG

Winsbergring 10 Telephone +49 (0)40 890 69 29 -0
 22525 Hamburg Telefax +49 (0)40 890 69 29 -29
 Germany

www.ihre-kabelverschraubung.de

info@ernst-heinrich.de
 www.ernst-heinrich.de



GL Systems Certification